

**WORKING HARD TO EARN TRUST**  
High Speed, Accuracy, Productivity & Reliability

**YIPC** new technologies are essential in developing and maintaining a successful CNC machining business, but it is exemplary service that will ultimately define most manufacturers.

**YIPC** is a professional designer, developer, manufacturer and supplier of CNC Machine Tools. The latest machining technology has been developed and applied in innovative ways to produce some of most complicated parts in the market. Every machine is designed and manufactured to give the clients outstanding accuracy and performance. This perfect technology is not just like pull out of a hat, nor does it grow on trees. The very aggressive team integrates more than 66 years experience and technology so as to make the finest CNC machines for international market.



**POWERED BY EXPERIENCE**



YVM-1000C

**YIPC**

**YANG IRON PRECISION CORP.**

No.48, Alley 78, Lane 699, Guangsing Rd.,  
Taiping Dist., Taichung City 411 Taiwan.  
Tel: 886-4-2270 1170 Fax: 886-4-2270 1160  
<http://www.yipc.com.tw>  
mail:business@yangcnc.com

**Products Range:**

- CNC Horizontal Machining Center
- CNC Double Column Vertical Machining Center
- CNC Vertical Machining Center
- CNC Turning Center
- CNC Lathe



Vertical Machining Center  
**YVM-1000C**

**YIPC**

# PRECISION COMES FROM RIGIDITY, AND RIGIDITY COMES FROM STRUCTURAL STRENGTH.

## Vertical Machining Center YVM-1000C



- X/Y/Z-axis travel: 1020/540/575mm
- X/Y/Z-axis rapid: 36m/min
- Standard spindle taper: ISO No.40 Taper 7/24
- Max. spindle speed: 12000 rpm
- Spindle motor: 11KW/15KW (Direct-Drive)
- ATC capacity: 24 pcs

BT-40 Tool Shank & Pull Stud

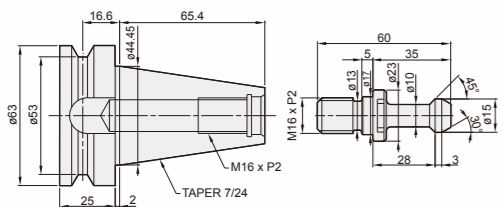
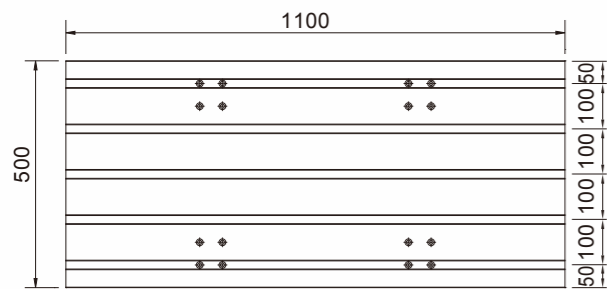
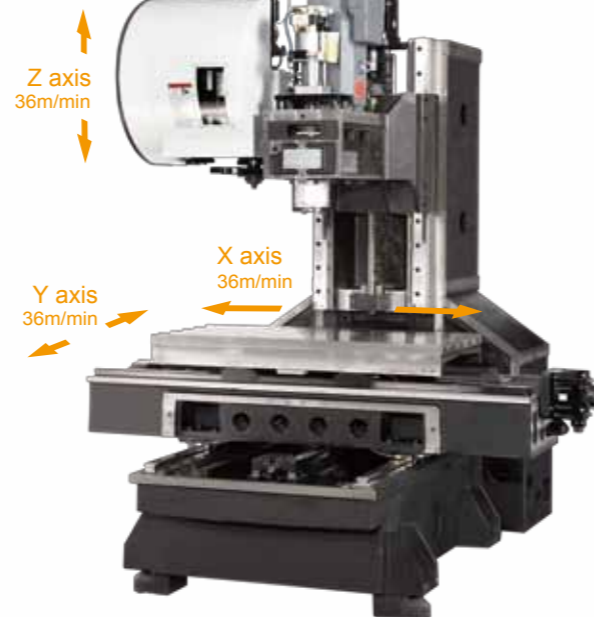


Table dimension Unit:mm

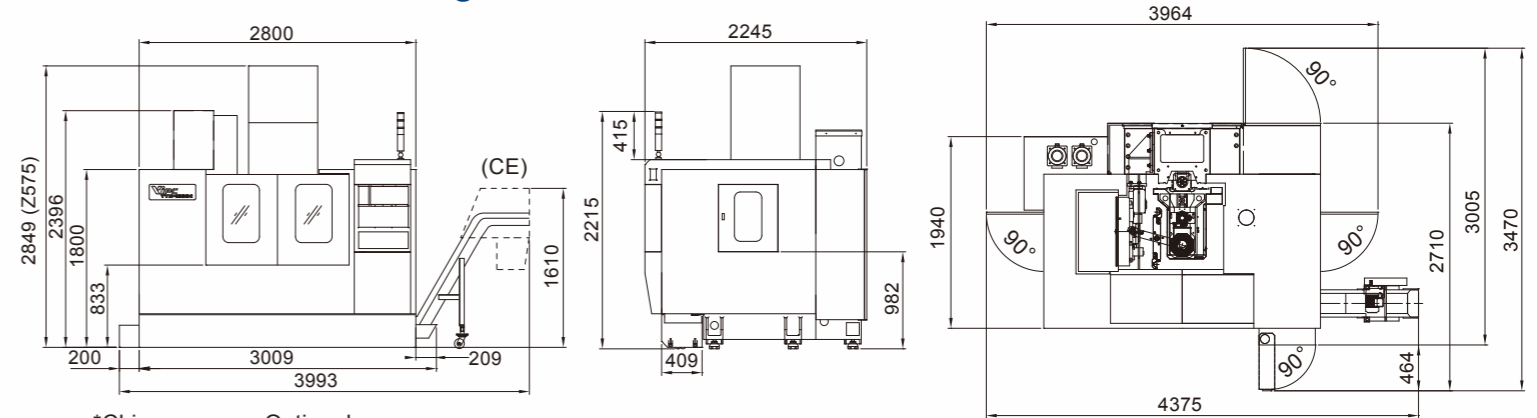


3-Axes Rapid Traverse



### Dimensional drawings

Unit:mm



\*Chip conveyor: Optional

Item	Specification	YVM-1000C
<b>Table</b>	Size (L x W)	1100 x 500mm
	Working Area (L x W)	1020 x 540mm
	T-slots	18mm x 5
	Max. Load	650kg
<b>Travel</b>	X, Y, Z-axis	1020 x 540 x 575mm
	Spindle Nose to Table Surface	125~700mm
	Spindle Center to Cover	540mm
<b>Spindle</b>	Taper	ISO No. 40
	Diameter	60mm
	Max. Speed	12000rpm
	Transmission	Direct-Drive
	Motor Power	11KW / 15KW
<b>ATC</b>	Capacity	24
	Selection	Bi-Directional
	Max. Tool Diameter and Length	78mm x 300mm
	Max. Tool Weight	8kg
	Holder Type	BT-40
	Tool Change Time (T.-T.)	2.5 sec.
<b>3-Axes Speed</b>	Cutting Feed Rate	12m/min
	Rapid Traverse	36m/min
<b>CNC Controller</b>		FANUC 0iMD
<b>Coolant Tank</b>	Capacity	200L
<b>Dimension</b>	Floor Space (LxWxH) (Approx.)	2800mm x 2250mm x 2850mm
	Net Weight (Approx.)	5100kgs

To keep improving new design, the specifications are subject to change without prior notice.

(220V/60HZ)

### Standard accessories

1. FANUC 0iMD controller
2. Spindle speed 12000rpm
3. Spindle power 11KW/15KW
4. Spindle oil cooler
5. Spindle air curtain device
6. 24 tools arm type magazine
7. Fully enclosure
8. T-slots table
9. Coolant system
10. Heat exchanger
11. Auto lubrication
12. Auto power off system
13. Rigid tapping
14. Work / Warning light
15. Leveling bolts and pads / Tool kit
16. Air gun
17. Flush system / Coolant and chip tank (Front side)
18. AICC function / 40 blocks (Fanuc)

### Optional Accessories

1. Ø70mm spindle (Large ceramic bearing)
2. Coolant through spindle
3. 4<sup>th</sup> axis CNC rotary table
4. Auto tool length measurement
5. Auto parts measurement
6. 3-axes optical scale (FAGOR)
7. Transformer
8. Air conditioner (electrical cabinet)
9. Oil mist collector
10. Oil skimmer
11. Water gun
12. Data server (Fanuc)
13. AICC II function / 200 blocks (Fanuc)
14. Screw type chip conveyor and chip cart (Front side and left output)
15. Chain type chip conveyor and chip cart (Front side and left output)